



# Village of Marble Cliff – Cambridge Boulevard

STAGE 2 DESIGN DEVELOPMENT REVIEW | 06.06.2025



**Public Realm Designer**

REALM Collaborative  
100 east broad street, suite 1710  
columbus, ohio 43215  
614.670.7390

[www.realmcollaborative.com](http://www.realmcollaborative.com)



**Civil Engineer**

Burgess & Niple  
330 rush alley, suite 300  
columbus, ohio 43215  
614.459.2050

[www.burgessniple.com](http://www.burgessniple.com)



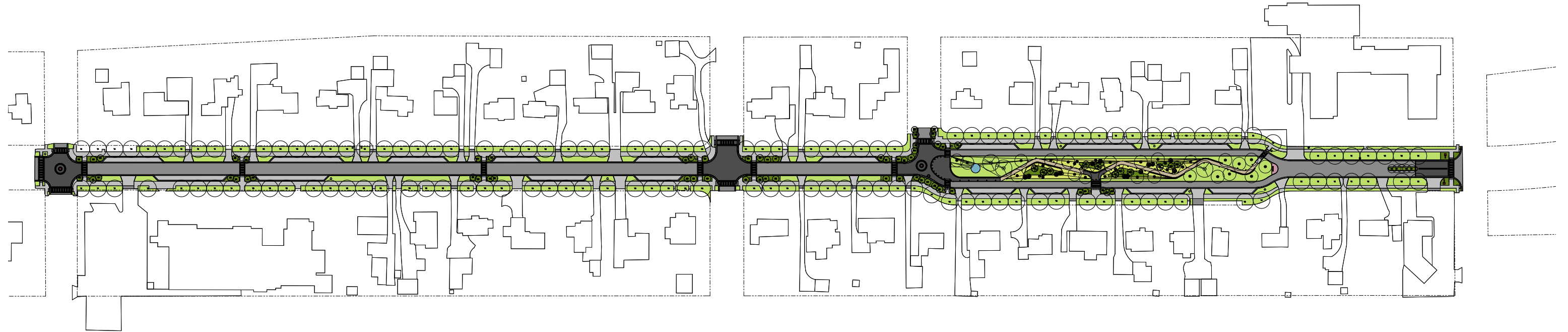
**Client**

Village of Marble Cliff  
1600 fernwood avenue  
columbus, ohio 43212  
614.486.6993

[www.marblecliff.org](http://www.marblecliff.org)

# 60% DESIGN DEVELOPMENT PLAN

CAMBRIDGE BOULEVARD

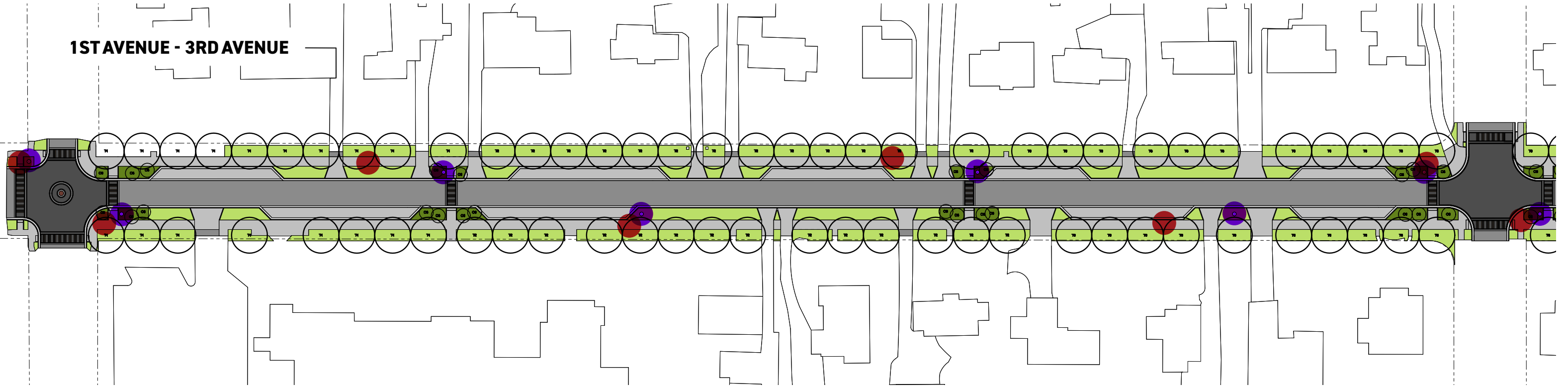


175 FT

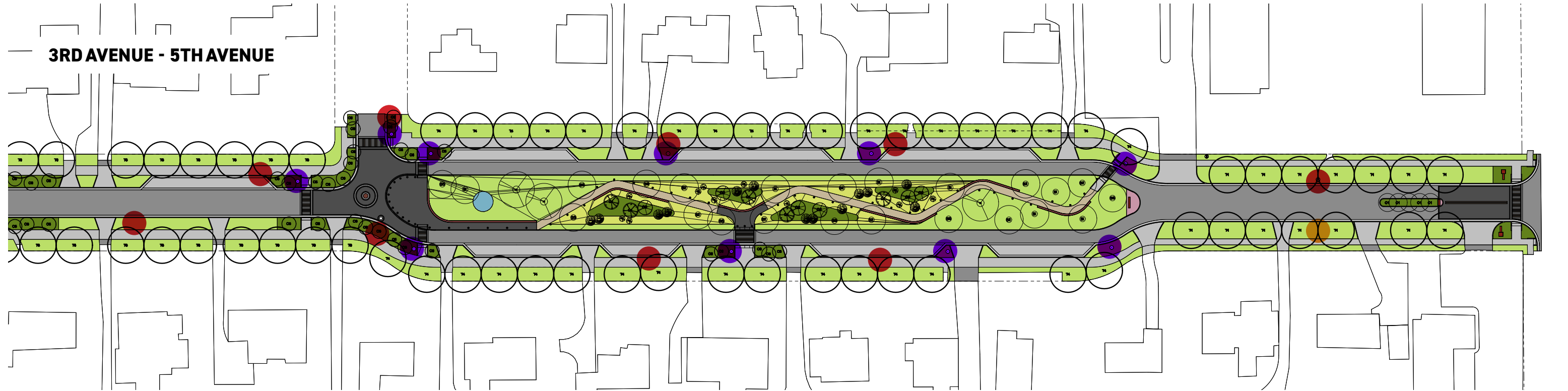
# ROADWAY LIGHTING PLAN

CAMBRIDGE BOULEVARD

1ST AVENUE - 3RD AVENUE

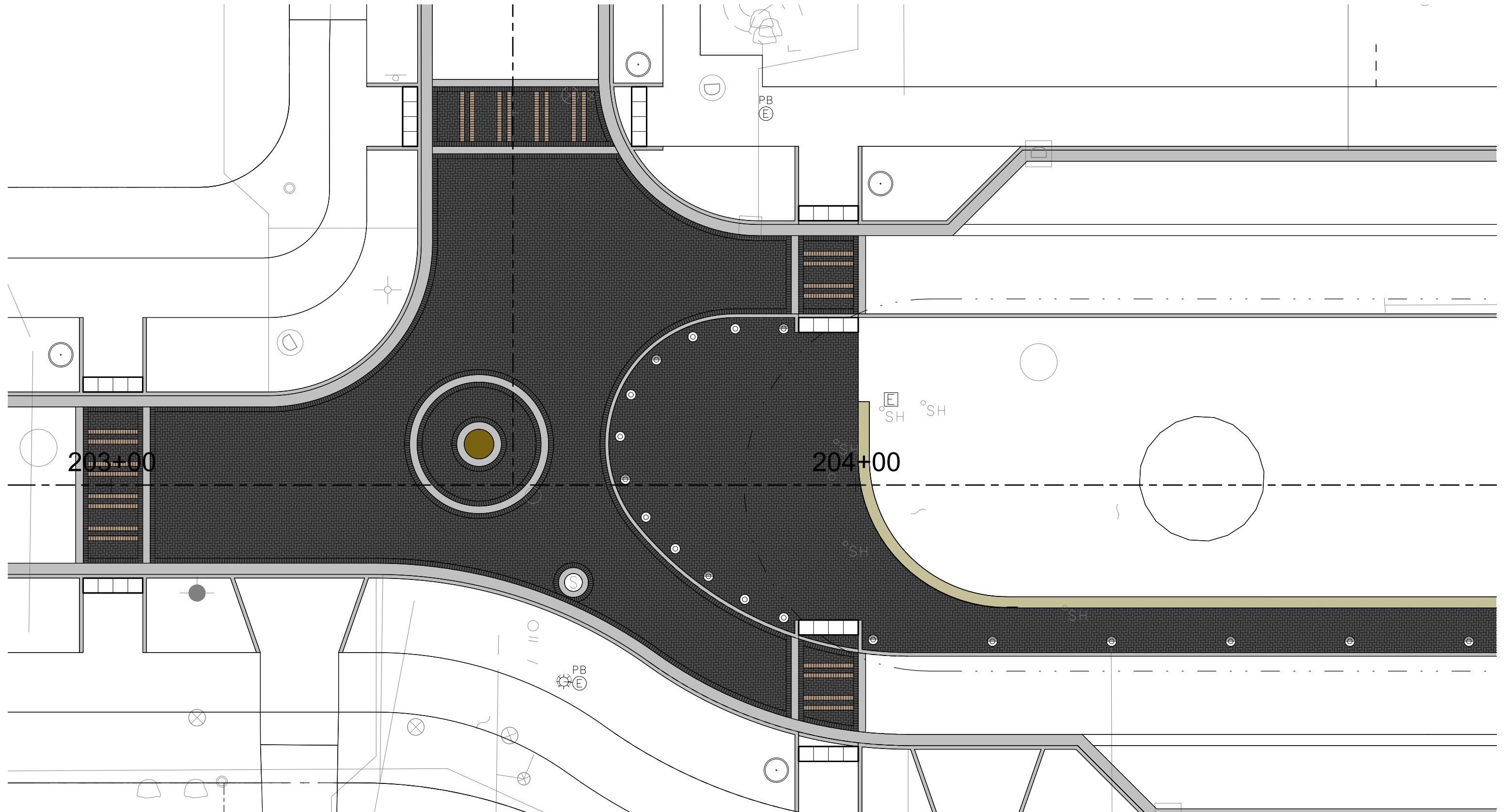


3RD AVENUE - 5TH AVENUE



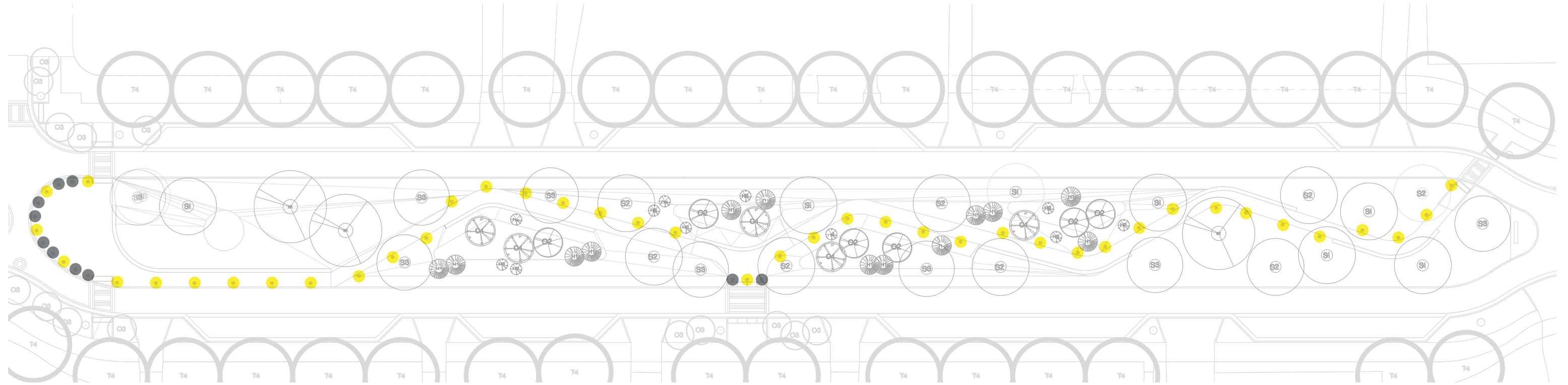
# ROADWAY PAVEMENT PATTERN

CAMBRIDGE BOULEVARD



# LINEAR PARK LIGHTING PLAN

CAMBRIDGE BOULEVARD



## BOLLARDS



● **Helio Bollard Series 900 Nonlit -  
Stainless Steel Vehicular Rated Bollard**  
Forms + Surfaces



● **Helio Bollard Series 900 Illuminated -  
Stainless Steel Pedestrian Bollard**  
Forms + Surfaces

# LINEAR PARK GATHERING AREA

CAMBRIDGE BOULEVARD



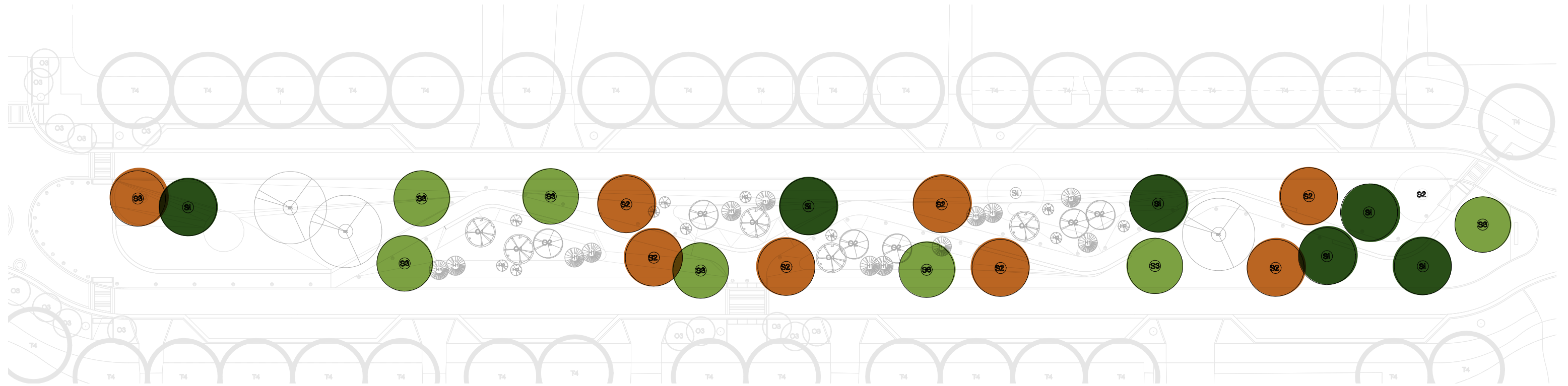
# LINEAR PARK GATHERING AREA

EVENING



# LINEAR PARK TREE PLANTING STRATEGY


CAMBRIDGE BOULEVARD




40 FT

## LINEAR PARK – NATIVE TREE SPECIES



 **Tulip Tree**  
Shade Tree



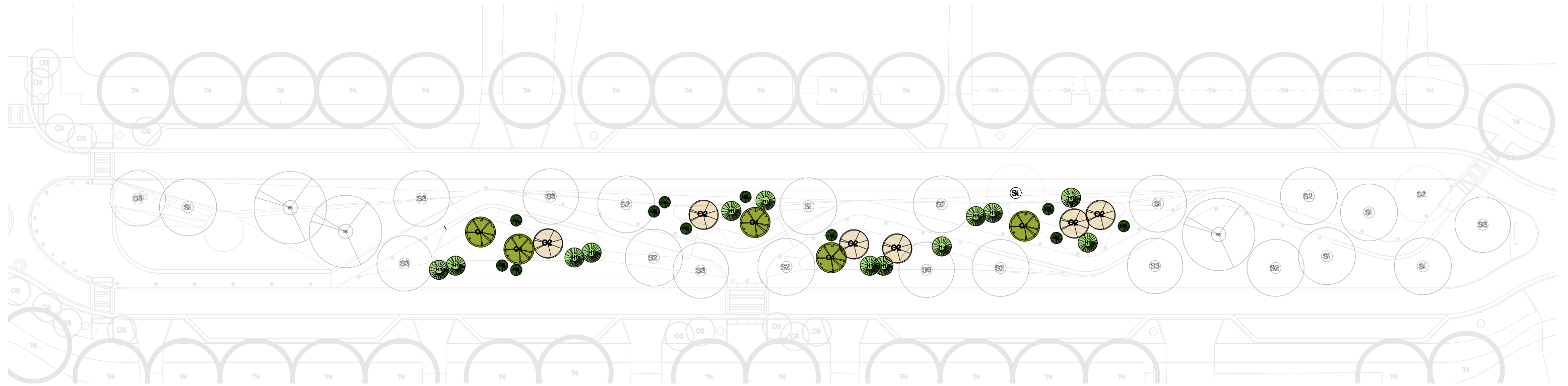
 **Northern Red Oak**  
Shade Tree



 **Northern Catalpa**  
Shade Tree

# LINEAR PARK TREE PLANTING STRATEGY

CAMBRIDGE BOULEVARD



40 FT

## LINEAR PARK – ORNAMENTAL TREES



**Dwarf American Hornbeam**  
Ornamental Multi-Stem



**Serviceberry**  
Ornamental Multi-Stem

## LINEAR PARK – WOODY SHRUBS



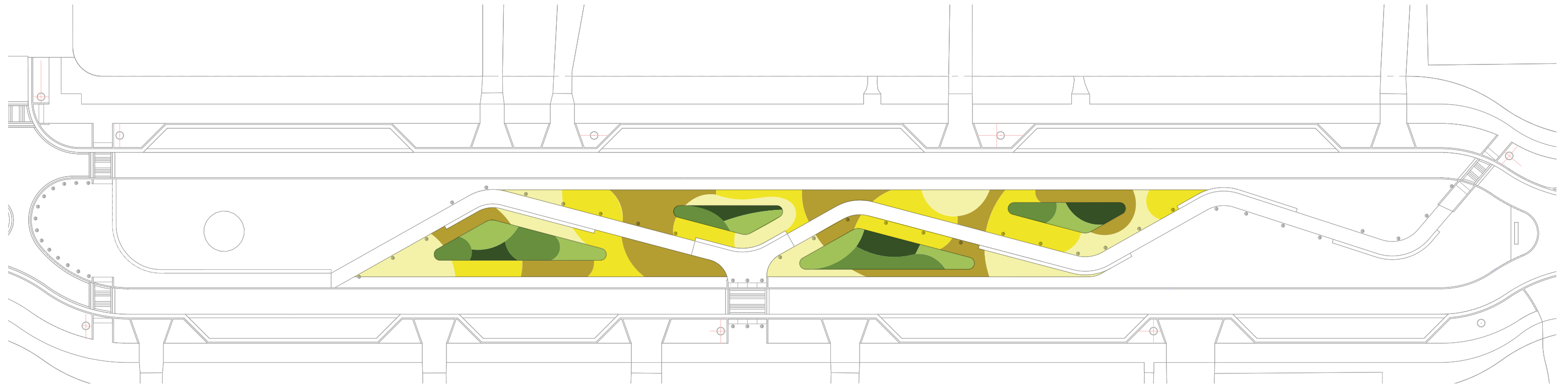
**Maple Leaf Viburnum**  
Woody Shrub



**Little Henry Dwarf Sweetspire**  
Woody Shrub

# LINEAR PARK RAIN GARDEN PLANTING STRATEGY

CAMBRIDGE BOULEVARD



40 FT

## LINEAR PARK — RAIN GARDEN PLANTINGS



**New England Aster**  
Upper Planting



**Iris Blue Flag**  
Upper Planting



**Prairie Drop Seed**  
Upper Planting



**Indian Soft Rush**  
Lower Planting



**Fox Sedge**  
Lower Planting



**Slender Mountain Mint**  
Lower Planting

# LINEAR PARK RAIN GARDEN

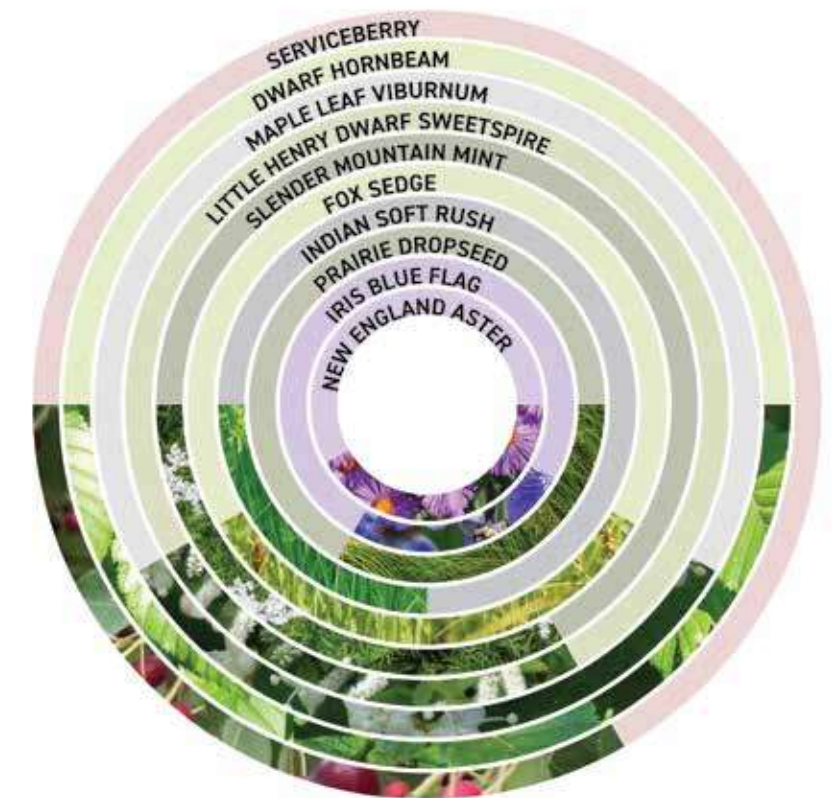
SECTION



PLANT MATRIX: **SPRING SEASONALITY**

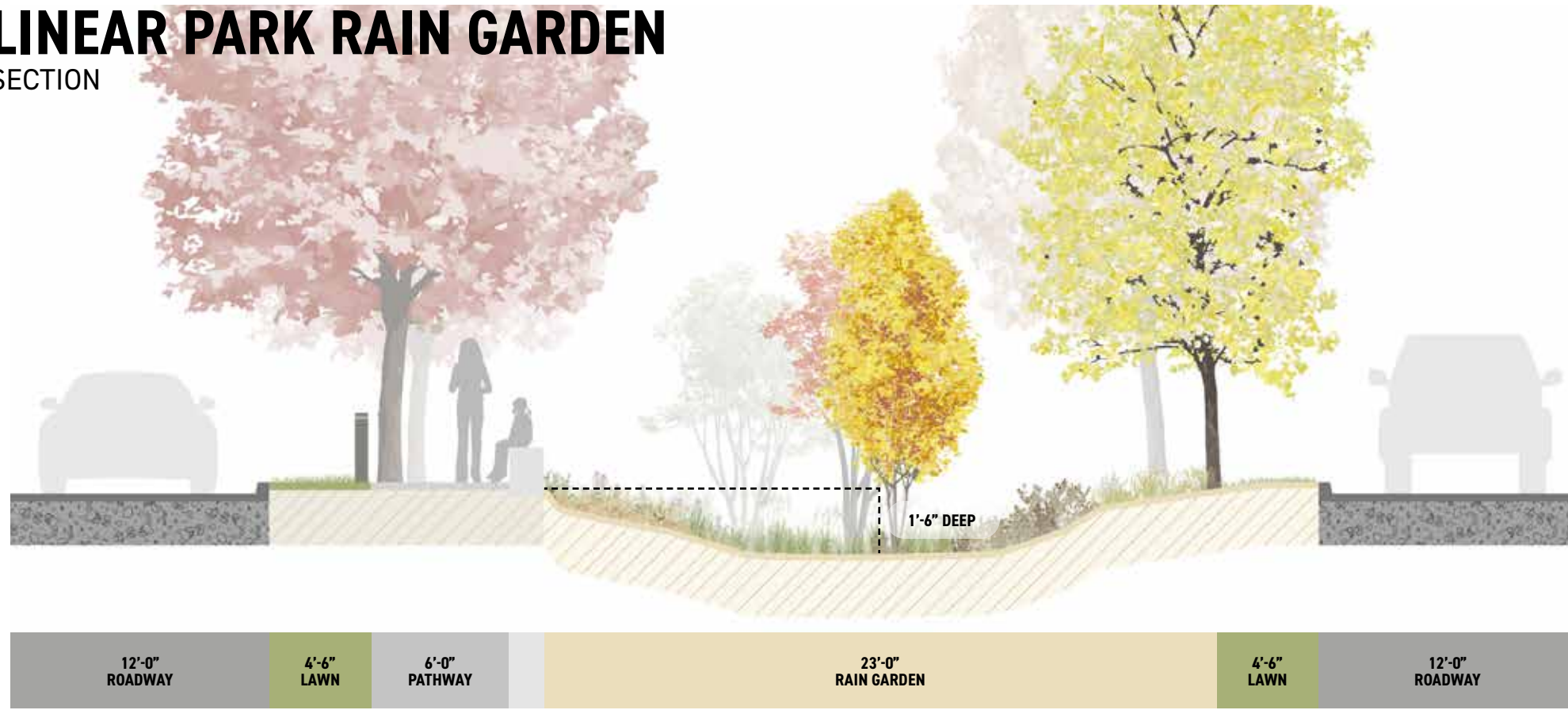


PLANT MATRIX: **SUMMER SEASONALITY**

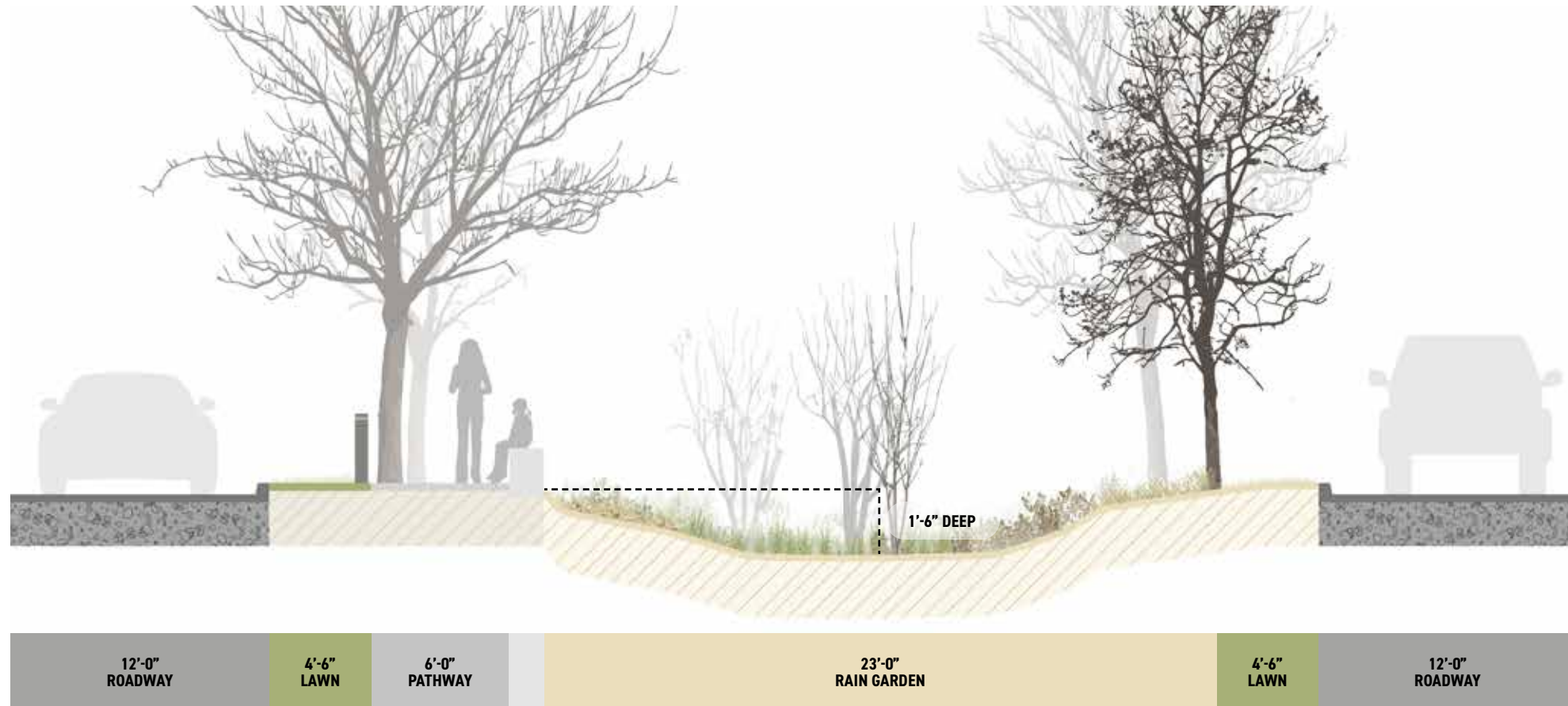
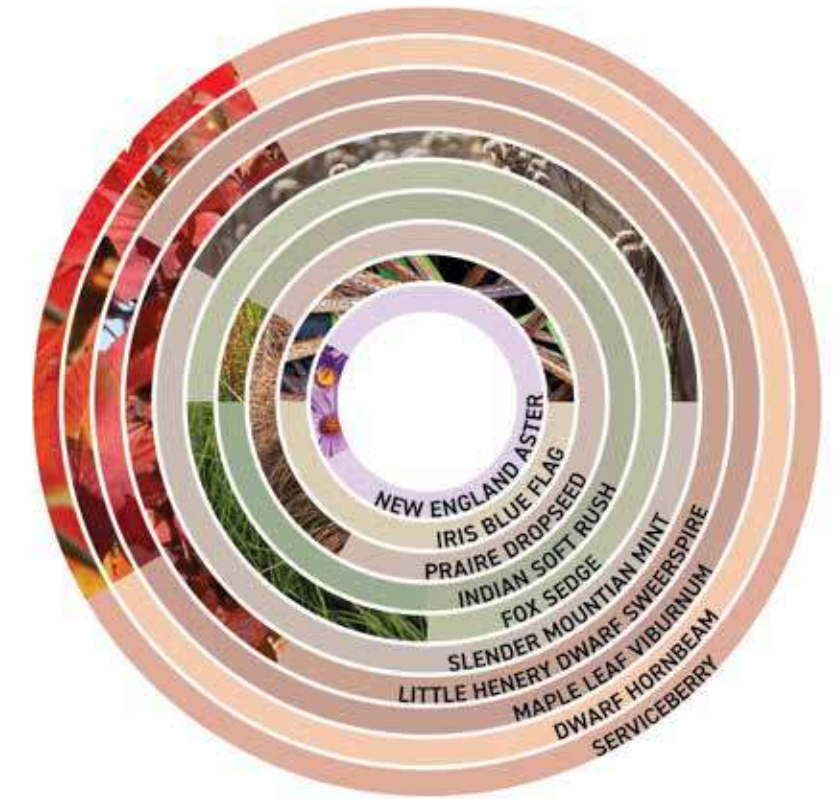


# LINEAR PARK RAIN GARDEN

SECTION



PLANT MATRIX: **FALL SEASONALITY**



PLANT MATRIX: **WINTER SEASONALITY**



# LINEAR PARK RAIN GARDEN - PATHWAY

INSTALLATION



# LINEAR PARK RAIN GARDEN - PATHWAY

3-5 YEARS



# LINEAR PARK RAIN GARDEN - PATHWAY

EVENING



# LINEAR PARK RAIN GARDEN - ROADWAY

INSTALLATION



# LINEAR PARK RAIN GARDEN - ROADWAY

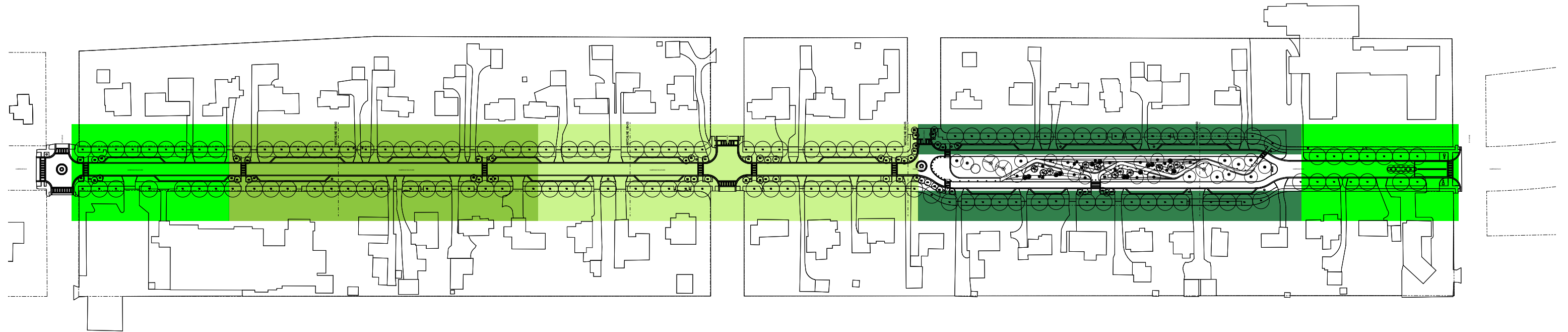
3-5 YEARS



# APPENDIX

# ROADWAY TREE PLANTING STRATEGY

CAMBRIDGE BOULEVARD



175 FT

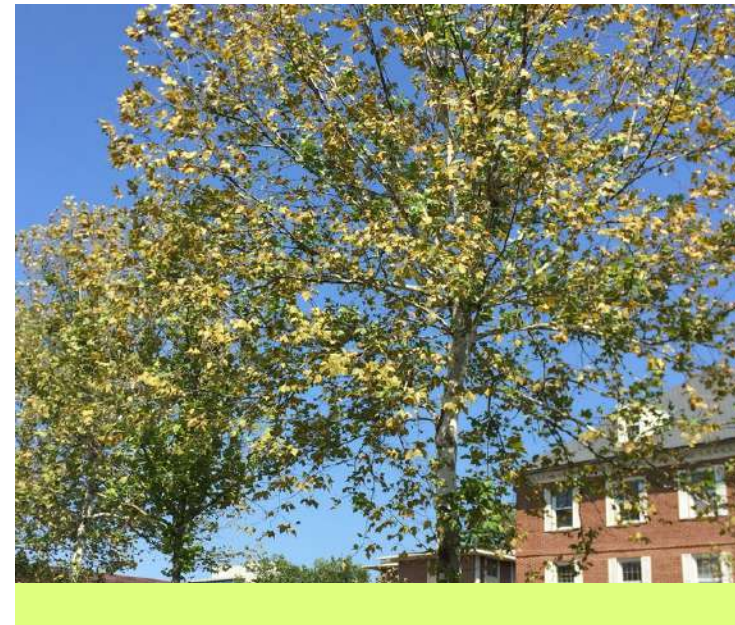
## ROADWAY – STREET TREE SPECIES



**Princeton Elm**  
Shade Tree



**Black Tupelo**  
Shade Tree



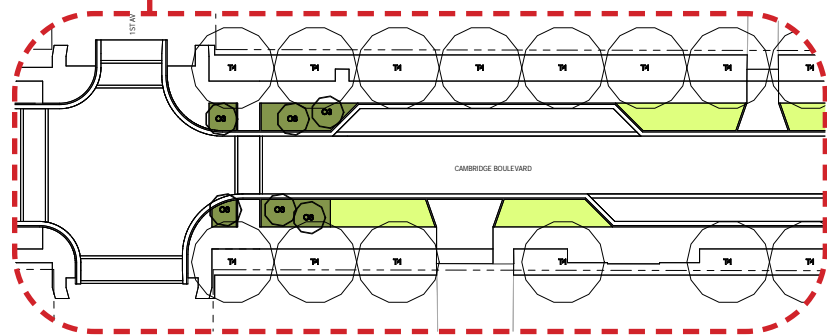
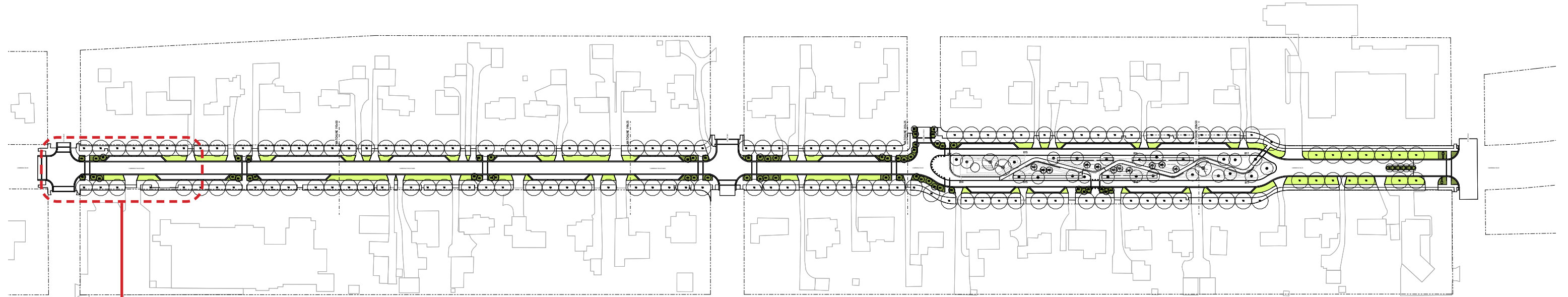
**London Planetree**  
Shade Tree



**State Street Maple**  
Shade Tree

# ROADWAY LANDSCAPE STRATEGY

CAMBRIDGE BOULEVARD



## KEY INTERSECTIONS & CROSSWALKS – TREE & PLANTING SPECIES



**Lawn**  
Primary



**Perennials**  
Key Intersections  
& Crosswalks



**Ground Cover**  
Key Intersections  
& Crosswalks



**Ornamental Tree**  
Key Intersections  
& Crosswalks



**White Tulips**  
Perennials



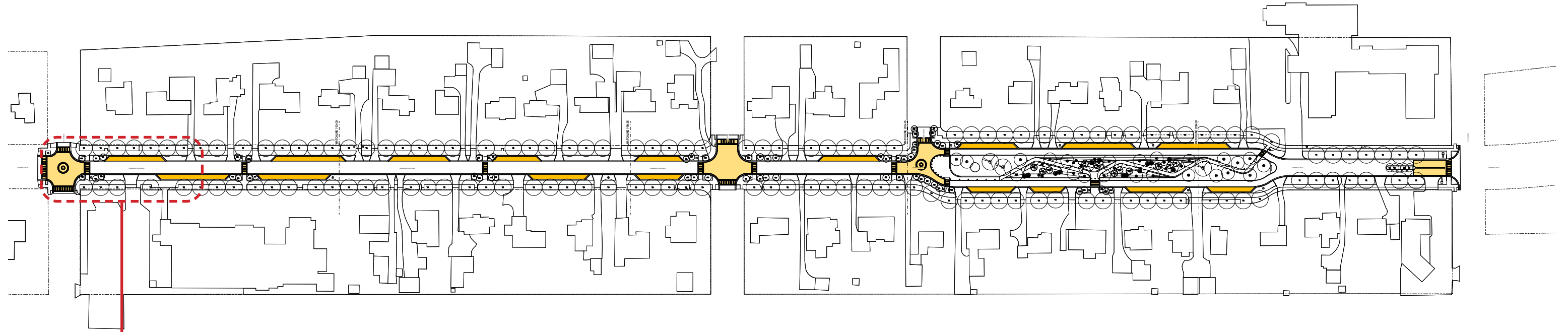
**Vinca Minor (Periwinkle)**  
Ground Cover



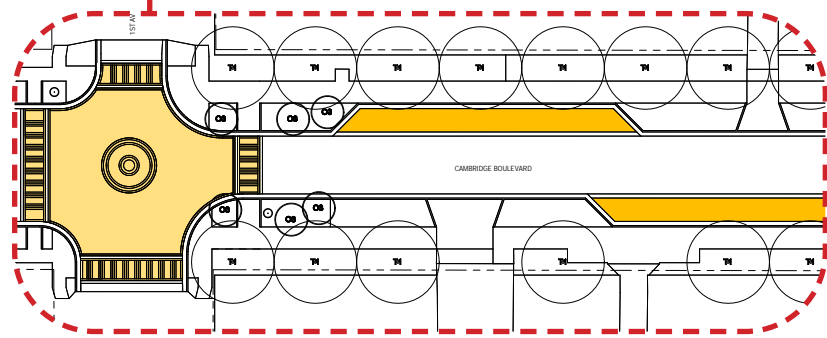
**Serviceberry**  
Ornamental Tree

# ROADWAY HARDSCAPE STRATEGY

CAMBRIDGE BOULEVARD



175 FT



## KEY INTERSECTIONS & CROSSWALKS – COLOR SAMPLES



**Vehicular Concrete**  
On-Street Parking



**Brick Pavers**  
Intersections



**Brick Pavers**  
Crosswalks



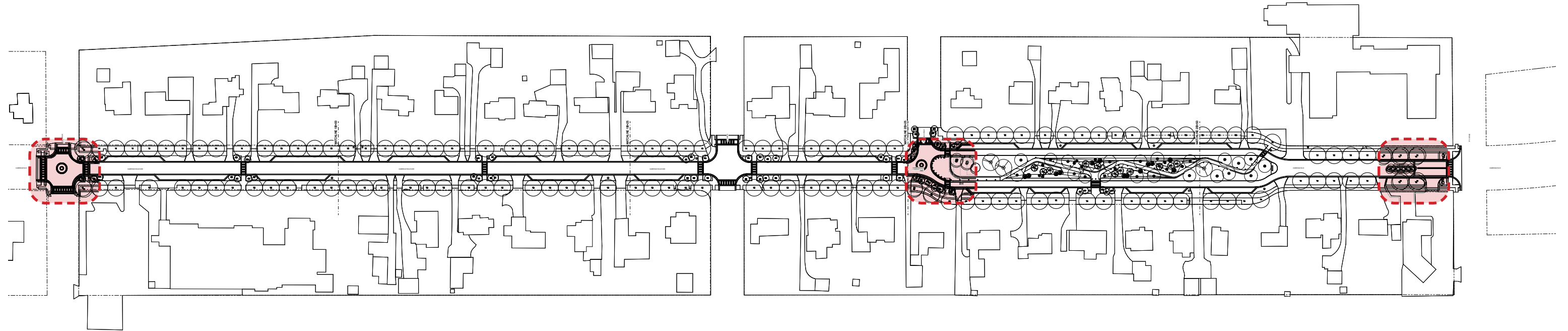
**Midnight (Primary)**  
Brick Paver



**Lighthouse Gray (Details)**  
Brick Paver

# ROADWAY BRANDING STRATEGY

CAMBRIDGE BOULEVARD



175 FT



## BRANDING PRECEDENTS



**Bronze Seal**  
1st & Cambridge



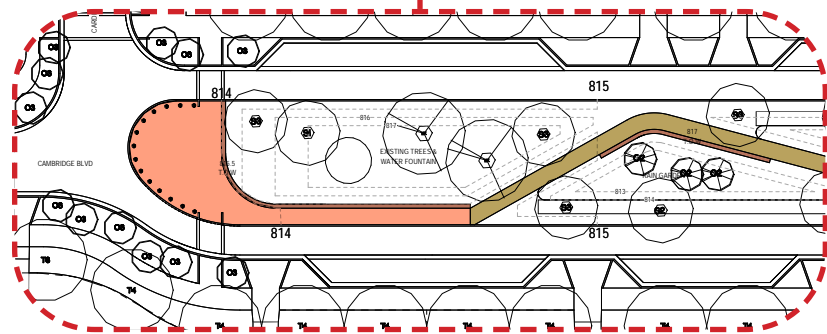
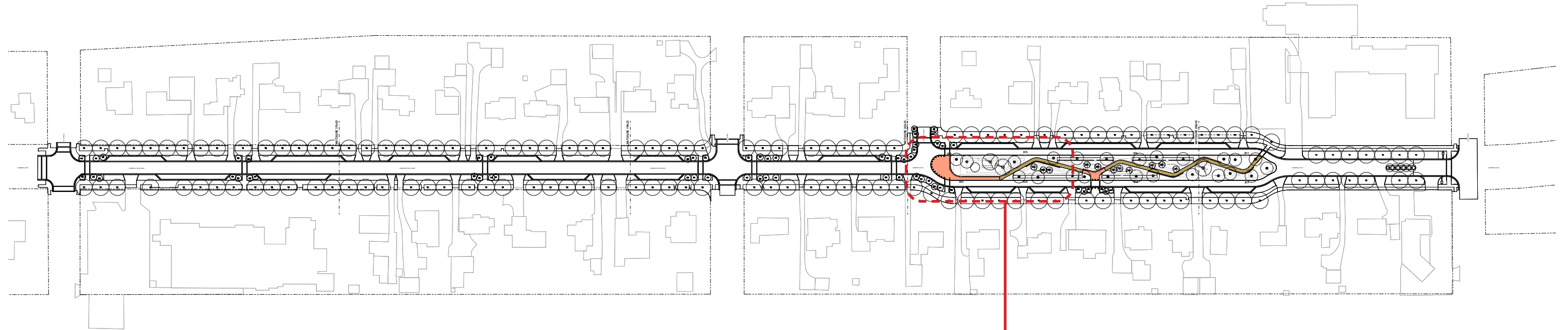
**Brick Inlay**  
Cardigan & Cambridge



**Limestone Column**  
5th & Cambridge

# LINEAR PARK HARDSCAPE STRATEGY

CAMBRIDGE BOULEVARD



## LINEAR PARK – COLOR SAMPLES



**Brick Pavers**  
Gathering Areas



**Crushed Gravel**  
Pathways



**Limestone**  
Seat Walls



**Midnight (Primary)**  
Brick Paver



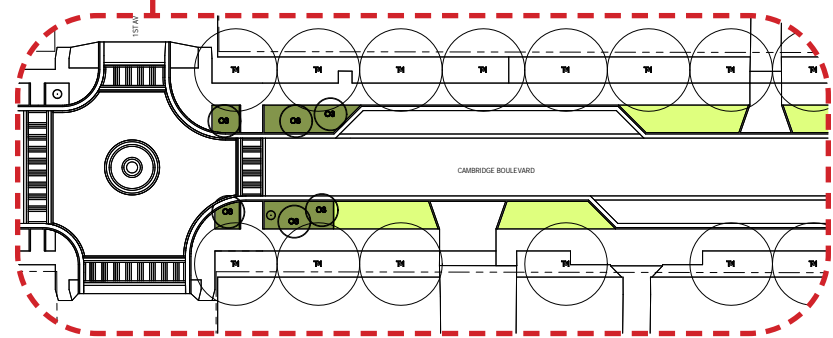
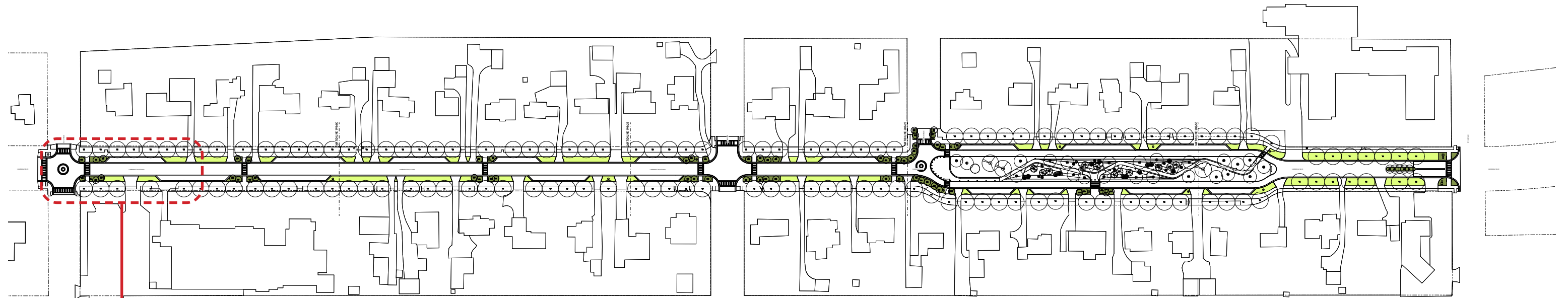
**Imperial Gray Pathway Mix**  
Crushed Gravel



**Bexley Limestone**  
Limestone Seat Walls

# ROADWAY LANDSCAPE STRATEGY

CAMBRIDGE BOULEVARD



175 FT

## KEY INTERSECTIONS & CROSSWALKS – TREE & PLANTING SPECIES



**Lawn**  
Primary



**Perennials**  
Key Intersections  
& Crosswalks



**Ground Cover**  
Key Intersections  
& Crosswalks



**Ornamental Tree**  
Key Intersections  
& Crosswalks



**White Tulips**  
Perennials



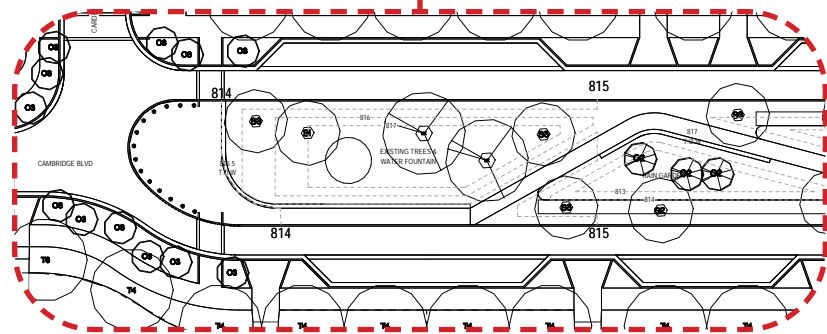
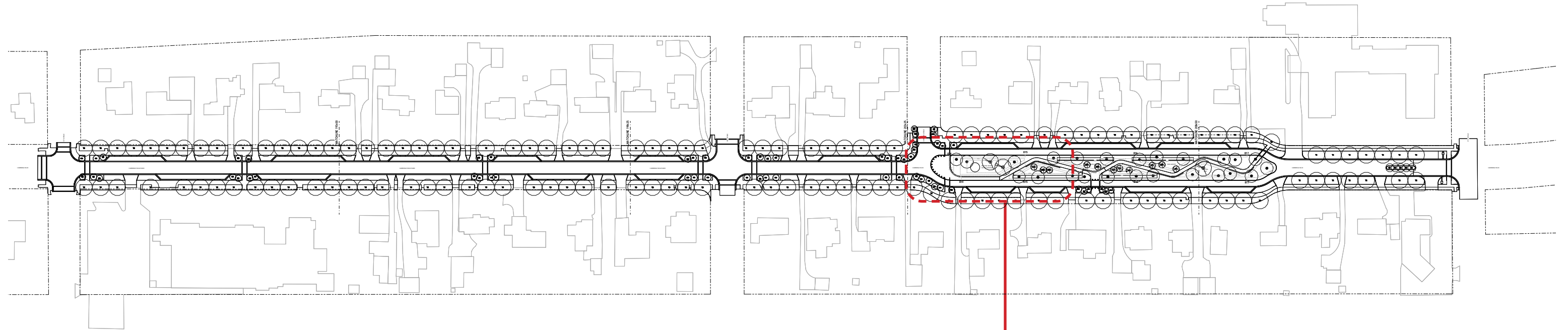
**Vinca Minor (Periwinkle)**  
Ground Cover



**Serviceberry**  
Ornamental Tree

# LINEAR PARK ELEMENTS STRATEGY

CAMBRIDGE BOULEVARD



## MANUFACTURERS



**Bollards**  
Pedestrian Safety



**Tables**  
Future Addition



**Chairs**  
Future Addition



**Stainless Steel Vehicular Rated Bollard**  
Forms + Surfaces



**Chipman Table**  
Landscape Forms



**Chipman Chairs**  
Landscape Forms

# ROADWAY & LINEAR PARK MATERIAL SAMPLES

CAMBRIDGE BOULEVARD

OPTION B: OTTAWA SMOOTH  
LIMESTONE



COLUMBUS BUFF  
LIMESTONE  
TUMBLER



LANG  
STONE BEXLEY  
BUFF



OPTION A: BEXLEY BUFF  
LIMESTONE

CRUSHED GRAVEL PATHWAY  
COLOR: IMPERIAL GRAY



OPTION C: COLUMBUS BUFF  
LIMESTONE



BRICK PAVERS  
COLOR: LIGHTHOUSE GRAY

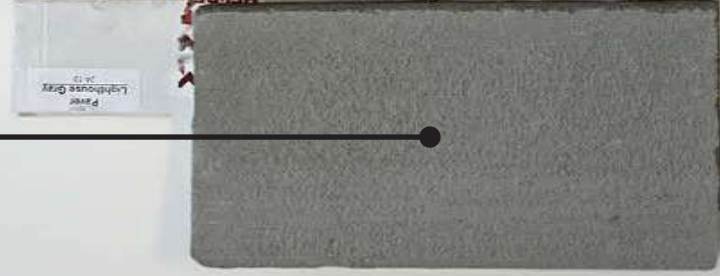


Cloud  
Ceramics  
COLOR: MIDNIGHT IS  
SIZE: MODULAR  
TEXTURE: VELOUR  
DATE: 02-02-24



BRICK PAVERS  
COLOR: MIDNIGHT

BROOM FINISH  
CONCRETE





**Public Realm Designer**

REALM Collaborative  
100 east broad street, suite 1710  
columbus, ohio 43215  
614.670.7390

[www.realmcollaborative.com](http://www.realmcollaborative.com)



**Civil Engineer**

Burgess & Niple  
330 rush alley, suite 300  
columbus, ohio 43215  
614.459.2050

[www.burgessniple.com](http://www.burgessniple.com)



**Client**

Village of Marble Cliff  
1600 fernwood avenue  
columbus, ohio 43212  
614.486.6993

[www.marblecliff.org](http://www.marblecliff.org)

---